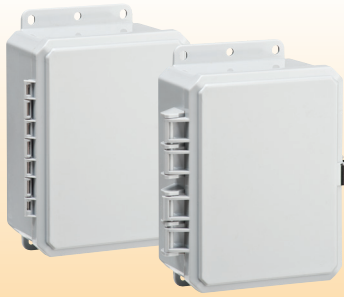


## IMPACT LINE OVERVIEW - 100% NON-METALIC

- **900 inlb Impact Resistance**  
Polycarbonate is known for its high impact resistance and that is why we chose to use it as the material for our Impact Line Enclosures
- **Wide Operating Temperature Range**  
Polycarbonate is stable and holds its tensile strength better than other non-metallic materials over a temperature range from -40 deg F to 265 deg F.
- **Crystal Clear Covers**  
Clear covers are a superior alternative to mechanically affixed window kits.
- **EZ Hinge or Low Profile Hinge**  
Integra's standard hinges allow easy door removal or replacement while permitting a full 225 degree door swing. The new low profile hinge is not removable, but provides a cleaner look to the enclosure.
- **Integrated Flanges**  
All Impact series enclosures eliminate the need to affix the mounting feet or flange to the enclosure. The mounting flanges are simply molded in to the enclosure.
- **Integrated Latch**  
The integrated latch provides for a very clean look and easy opening of the enclosure which is available on all Impact enclosures. A stainless steel and non-metallic latch is also available on most sizes. (Integrated latch is only latch option available on 9x8x2)
- **Advanced Face Plate System**  
Two brackets, four screws and a face plate and that is all that is needed to quickly and cleanly install the face plate system. (6x6x3 and 8x6x3 only)
- **Advanced Swing Panel System**  
Two brackets, four screws and the swing panel is all that is needed to quickly and cleanly install the swing panels system. (6x6x3 and 8x6x3 only)
- **Molded in Mounting Bosses**  
All of the Impact line enclosures have extra mounting bosses molded into the rear wall to permit #8 (for 6x6x3 and 8x6x3) and #10 (for 9x8x2 and 10x8x6) self tapping screws to secure din rail, circuit board, or any other device or component into the enclosure.
- **Latch Securely Attached**  
Impact enclosures are available in stainless steel or non-metallic latch options that are bolted in place for a more secure system than pop rivets or slide on latches
- **Modifications**  
Full modifications services are available at Integra, including machining holes for displays, cable connectors, multi pin connectors, antennae, etc. Call us to discuss your unique requirements.
- **Customization**  
Custom colors, custom back panels, silk screening, sub assembly of your product, or any other tailoring of our product to your need is our job. (Minimums may apply)
- **Packaging**  
Standard packaging is one unit per carton, packed to ensure safe delivery to your location. If you have any special requirements for shipping, call us and we can work to meet your requirements.



## EZ OR LOW PROFILE HINGES



Integra's standard hinges allow easy door removal or replacement while permitting a full 225 degree door swing. The new low profile hinge is not removable, but provides a cleaner look to the enclosure.

## CLEAR COVER



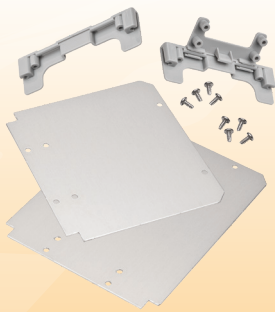
Clear covers are a superior alternative to mechanically affixed window kits.

## INTEGRATED & LOCKING LATCHES



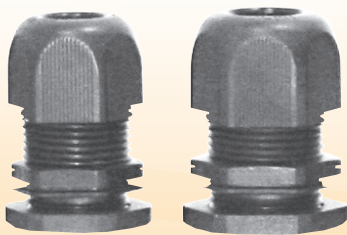
All Impact enclosures are available standard with the integrated locking latch. Most Impact enclosures also available with stainless steel (LL) or non-metallic (NL) latches that are bolted in place.

## SWING OUT PANEL KITS



Two brackets, four screws and the swing panel is all that is needed to quickly and cleanly install the swing panels system. (6x6x3 and 8x6x3 only)

## CORD GRIPS



- IP68/NEMA 4X/6P Rated
- Temp Range -30 C to 100 C
- UL 94 V0 Flame Rated
- Neoprene Sealing Grommet
- Polyamide Construction

## SWING PANEL AND FACE PLATE ASSEMBLY

### IMPACT FACE PLATE KIT ASSEMBLY



It's as easy as one, two, three...

#### FACE PLATE System

1. Install Four #8 self tapping screws to secure the brackets to the enclosure
2. Install Four #8 self-tapping screws to secure the face plate to brackets
3. You're done

### IMPACT SWING PANEL KIT ASSEMBLY



#### SWING PANEL System

1. Install Four #8 self tapping screws to secure the brackets to the enclosure
2. Install Four or Six(your choice) #8 self-tapping screws to secure the swing panel to the brackets
3. You're done